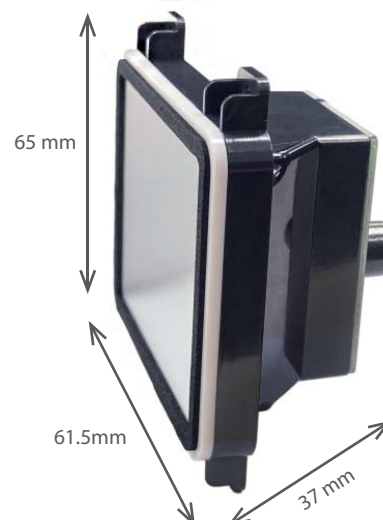


MT684 2D Barcode Scan Engine

MT684 is a 2D scan engine designed to scan mobile barcode in the easiest way. MT684 has a compact enclosure with an extra wide angle optics for contact scanning and captures all major 1D and 2D barcodes on mobile display. Its ready-to-use design accelerates the developing of mobile barcode scanning platform.

- Read all major 2D barcodes in the market
- Omnidirectional scanning in any direction
- 68° horizontal degrees and 50° vertical degrees of wide scan angle
- Embedded scan engine enhances design flexibility



Omnidirectional, Snappy Scanning

Built with highly sensitive image sensor, MT684 not only automatically captures any moving barcode at close range, but also delivers omnidirectional scanning in any direction, eliminating the need to align barcode. As a result lines are kept moving and wait time is minimized.

Easy and Flexible Operations

MT684 embedded scan engine enhances design flexibility by offering various output interfaces with USB HID, USB VCP, UART, fulfilling diverse industrial needs of communication methods as well as enabling user to easily configure the reading modes and scanner settings according to preference.

Largest Field of View

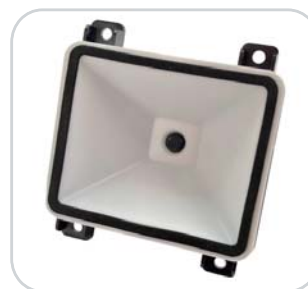
With the largest field of view, 68° of horizontal degrees and 50° of vertical degrees of wide scan angle, MT684 is capable of scanning the widest barcode from contact to 100mm away. As a result MT684 is suitable to be integrated into device with very limited reading distance in a constraint space.

Mobile-Friendly Scanning

With enhanced optical design and latest decode algorithm, MT684 virtually scans all 1D and 2D barcodes printed on any surface, either paper-based label with matte or glossy surface, or mobile phone display and LCD screen. As a result users may expand their business into many new applications such as eCoupon, eTicket, Digital ID cards and mobile payments.

Easy and Flexible Operations

- Wide angle optics for contact scanning
- Interfaces : USB HID, USB VCP, UART



Specifications

Optical & Performance	Light Source	White LED
	Sensor	640 x 480
	Resolution	5mil / 0.125mm (1D barcode) 10mil / 0.25mm (2D barcode)
	Scan Angle	Horizontal 68°, Vertical 50°
	Pitch Angle	±60°
	Skew Angle	±60°
	Roll Angle	360°
	Print Contrast	25%
	Typical D.O.F* (@ 800 Lux)	13Mil EAN13: 8 ~ 181 mm 15Mil Code128: 5 ~ 143 mm 15Mil QR Code: 2 ~ 119 mm
	Physical Characteristics	Dimension
Weight		30g
Color		Black
Material		Plastic
Connector		Micro USB Port 12pin ZIF Connector (pitch = 0.5mm) 9pin Wafer Connector (pitch = 1.0mm)
Indicator		Buzzer
Power		Operation Voltage
	Working Current	< 125mA
Connectivity	USB HID, USB VCP, UART	
User Environment	Operating Temperature	-20 ~ 60°C
	Storage Temperature	-40 ~ 70°C
	Humidity	5% ~ 95%RH (Non-condensing)
	Drop Durability	1.2 M
	Ambient Light	15,000 Lux (Fluorescent Light)
Decode Capability	1D Symbologies	UPC-A/ UPC-E0/ UPC-E1, EAN-8/ EAN-13, Code128, Code39, Code93, Codabar, Interleaved 2 of 5, Industrial 2 of 5, Matrix 2 of 5, Standard 2 of 5, China Post 25, Code11, MSI Plessey, Plessey, GS1 Databar, GS1 Databar Limited, GS1 Databar Expanded
	2D Symbologies	QR Code, Micro QR Code, PDF417, MicroPDF417, Data Matrix, Aztec, MaxiCode, Han Xin, Code16K
Regulatory	ESD	Functional after 4KV contact, 8KV Air discharge
	EMC	FCC Part 15B Class B, CE EN55032/35
	Safety Approval	EN62471 (Exempt Group)
	Environmental	RoHS 2.0



MARSON TECHNOLOGY CO., LTD.

TEL: +886-2-2218-1633

FAX: +886-2-2218-6638

Web: www.marson.com.tw

