

## Hands-Free Scanner

# MT6230 2D Presentation Scanner

MT6230 is a 2D presentation scanner designed to stimulate customer service and retail revenues at an affordable cost. MT6230 decodes major 2D barcodes as well as all major 1D barcodes. This reliable, cost-effective presentation scanner is an ideal choice for a variety of applications, including retail point-of sale, e-ticket and mobile payment.

- Read all major 2D barcodes in the market
- Automatically captures any moving barcode
- Omnidirectional scanning in any direction
- Superior motion tolerance up to 6 M/Sec



### Hands-free, Omnidirectional Scanning

Built with highly sensitive image sensor, MT6230 not only automatically captures any moving barcode at close range, but also delivers omnidirectional scanning in any direction, eliminating the need to align barcode. As a result lines are kept moving and wait time is minimized. The Integrated adjustable stand also ensures the maximum scanning angle and hands-free flexibility.

### Superior Motion Tolerance

MT6230, with the speed of 120 frames per second, momentarily captures all 1D barcodes, and major 2D barcode including PDF417, QR Code and Data Matrix. MT6230 also delivers unparalleled motion tolerance up to 6 M/Sec that optimize the accuracy and efficiency of barcode scanning.

### Ambient Light Immunity

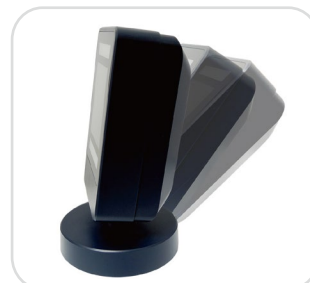
MT6230 2D hands-free barcode scanner is ideal for both indoors and outdoors scanning applications which require more immunity for ambient light. By automatically adjusting its parameters for optimal scanning performance MT6230 2D presentation scanner provides the freedom to scan barcodes from under complete darkness to direct sunlight.

### Mobile-Friendly Scanning

With enhanced optical design and latest decode algorithm, MT6230 virtually scans all 1D and 2D barcodes printed on any surface, either paper-based label with either matte or glossy surface, or mobile phone display and LCD screen. As a result users may expand their business into many new applications such as eCoupon, eTicket, Digital ID cards and mobile payments.

### Easy and Flexible Operations

- Motion Tolerance
- Interfaces : RS232, USB HID



# MT6230 2D Presentation Scanner

## Specifications

Optical & Performance	Light Source	visible red LED
	Sensor	640 x 480
	Scan Rate	120 Frames/Sec
	Resolution	4mil/ 0.1mm
	Scan Angle	Horizontal 45°, Vertical 35°
	Pitch Angle	±65°
	Skew Angle	±60°
	Roll Angle	360°
	Print Contrast	20%
	Width of Field	135mm (13Mil Code39)
	Motion Tolerance	Max. 6 M/Sec (15 Mil UPC/EAN)
	Typical D.O.F* (@ 800 Lux)	Code128 10 Mil : 20 ~ 170 mm UPC/EAN 15 Mil : 10 ~ 280 mm QR Code 10 Mil : 10 ~ 100 mm 20 Mil : 10 ~ 240 mm Data Matrix 15 Mil : 20 ~ 160 mm
	Physical Characteristics	Dimension
Weight		250g
Color		Black
Material		Plastic
Connector		USB Type A, D-sub 9
Cable		2M Interchangeable Cable
Trigger		N/A
Indicator		LED, Buzzer
Power	Operation Voltage	5.0 VDC
	Working Current	< 500mA
	Standby Current	< 500mA
Connectivity	Interface/ Profile	RS232, USB HID
User Environment	Operating Temperature	-30 ~ 70°C
	Storage Temperature	-40 ~ 80°C
	Humidity	5%~95% RH (Non-condensing)
	Drop Durability	1.5 M
	Sealing	N/A
	Ambient Light	100,000 Lux (Sunlight)
Decode Capability	1D Symbologies	UPC-A/UPC-E, EAN-8/EAN-13, ISBN, Code 128, ISBT 128, Code 39, Code 93, Code 11, Interleaved 2 of 5, Industrial 2 of 5, Matrix 2 of 5, Standard 2 of 5, Codabar, MSI Plessey, GS1 Databar
	2D Symbologies	QR Code, Data Matrix, PDF417
Regulatory	ESD	Functional after 8KV contact, 12KV Air discharge
	EMC	TBA
	Safety Approval	TBA
	Environmental	TBA

\* All Specifications are subject to change without notice.



**MARSON TECHNOLOGY CO., LTD.**  
TEL: +886-2-2218-1633  
FAX: +886-2-2218-6638  
Email : [info@marson.com.tw](mailto:info@marson.com.tw)

