



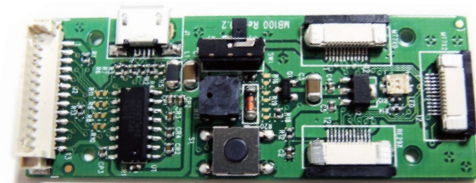
MT30 Long Range Scan Engine

MT30 scan engine delivers user the best scanning performance from a minimal form factor. With the ability to scan all 1D barcodes from longer distance as well as 3 mil high-density barcodes, MT30 is ideal for scanner integration in both portable and fixed devices such as smart phone, tablet PC, industrial PDA, lottery kiosk, access gate and more.

Best Performance for All Applications

- Reading distance up to 550mm in depth
- With the ability to read 3 mil barcodes
- Read all major 1D barcodes in the market
- Support real-time dynamic configurations

Useful Demo Kit : MB100 Multi I/O Board



Easy and Flexible Operations

- Small Size : W20.6 x L22.5 x H11.2 mm
- Interface : UART TTL, USB HID, USB VCP



Optic & Performance	
Light Source	625nm visible red LED
Sensor	Linear Image Sensor
Scan Rate	400 Scans/Sec
Resolution	3Mil/ 0.075mm
Scan Angle	41°
Pitch / Skew / Roll Angle	±60° / ±30° / ±20°
Print Contrast Ratio	30%
Width of Field	200 mm (13Mil Code39)
Typical D.O.F (@800 lux)	Code 39 15 Mil: 35 ~ 552 mm UPC/ EAN 13 Mil: 31 ~ 448 mm
Physical Characteristics	
Dimension	W20.6 x L22.5 x H11.2 mm
Weight	3.3g
Color	Black
Material	PC
Connector	12pin ZIF (pitch=0.5mm)
Cable	12pin flex cable (pitch=0.5mm)
Electrical	
Operation Voltage	3.3±0.15VDC
Working Current	< 130mA
Standby Current	< 70mA
Idle Current (Sleep Mode)	< 100uA
Connectivity	
Interface/ Profile	UART TTL, USB HID, USB VCP
User Environment	
Operating Temperature	-20°C ~ 60°C
Storage Temperature	-20°C ~ 60°C
Humidity	0%~95% RH (Non-condensing)
Drop Durability	1.5M
Ambient Light	70,000 Lux (Sunlight)
Regulatory	
ESD	Functional after 4KV contact, 8KV Air discharge (requires housing that is designed for ESD protection and stray from electric fields)
EMC	FCC Part 15B Class B, CE EN55022/24/32
Safety Approval	EN/IEC62471 (Exempt Group)
Environmental	RoHS 2.0, WEEE
Symbolologies	
1D	UPC-A/UPC-E, EAN-8/EAN-13, Industrial 2 of 5, Codabar, Matrix 2 of 5, Code 11, Code 93, Code 32, Code 128, Standard Code 39, Full ASCII Code 39, Interleaved 2 of 5, China Postal Code, MSI Plessey Code, UK Plessey Code, EAN/UCC 128, Telepen Code, IATA Code, GS1 Databar

* All specifications are subject to change without notice.



MARSON TECHNOLOGY CO., LTD.
TEL: +886-2-2218-1633
FAX: +886-2-2218-6638
Email : info@marson.com.tw



TAIWAN EXCELLENCE
GOLD AWARD 2017



TAIWAN
EXCELLENCE 2016



GOOD DESIGN
AWARD 2015

