

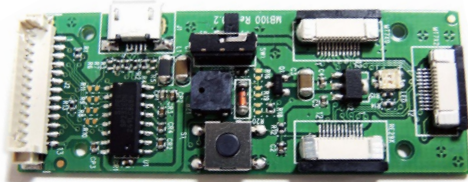
## MT15 Ultra-mini Scan Engine

MT15 is an extremely miniaturized 1D scan engine that is designed to fit into the most space-constrained applications, including mobile device, wearable device and smartphone. With 3.3V low voltage power supply and power consumption of a few micro amps during sleep mode, MT15 barcode scan engine is also ideal for host device with limited battery.

### Ideal for Space-Constrained Applications

- The smallest and lightest 1D scan engine
- Read all major 1D barcodes in the market
- Fit into the most space-constrained products
- Support real-time dynamic configurations

### Useful Demo Kit : MB100 Multi I/O Board



### Easy and Flexible Operations

- Small Size : W11.5 x L10.0 x H7.2 mm
- Interface : UART TTL



Optic & Performance	
Light Source	625nm visible red LED
Sensor	Linear Image Sensor
Scan Rate	500 Scans/Sec
Resolution	4Mil/ 0.1mm
Scan Angle	41°
Pitch / Skew / Roll Angle	±30° / ±40° / ±20°
Print Contrast Ratio	30%
Width of Field	171 mm (13Mil Code39)
Typical D.O.F ( @800 lux)	UPC/ EAN 13 Mil: 45 ~ 277 mm
Physical Characteristics	
Dimension	W11.5 x L10 x H7.2 mm
Weight	0.7g
Color	Black
Material	PC
Connector	8pin Gold Fingers
Cable	N/A
Electrical	
Operation Voltage	3.3±0.15VDC
Working Current	< 55mA
Standby Current	< 30mA
Idle Current (Sleep Mode)	< 500uA
Connectivity	
Interface/ Profile	UART TTL
User Environment	
Operating Temperature	0°C ~ 50°C
Storage Temperature	-20°C ~ 60°C
Humidity	0%~95% RH (Non-condensing)
Drop Durability	1.5M
Ambient Light	100,000 Lux (Sunlight)
Regulatory	
ESD	Functional after 4KV contact, 8KV Air discharge
EMC	FCC Part 15B Class B, CE EN55024/32
Safety Approval	EN/IEC62471 (Exempt Group)
Environmental	RoHS 2.0, WEEE
Symbologies	
1D	UPC-A/UPC-E, EAN-8/EAN-13, Industrial 2 of 5, Codabar, Matrix 2 of 5, Code 11, Code 93, Code 32, Code 128, Standard Code 39, Full ASCII Code 39, Interleaved 2 of 5, China Postal Code, MSI Plessey Code, UK Plessey Code, EAN/UCC 128, Telepen Code, IATA Code, GS1 Databar

\* All specifications are subject to change without notice.



**MARSON TECHNOLOGY CO., LTD.**  
TEL: +886-2-2218-1633  
FAX: +886-2-2218-6638  
Email : [info@marson.com.tw](mailto:info@marson.com.tw)

